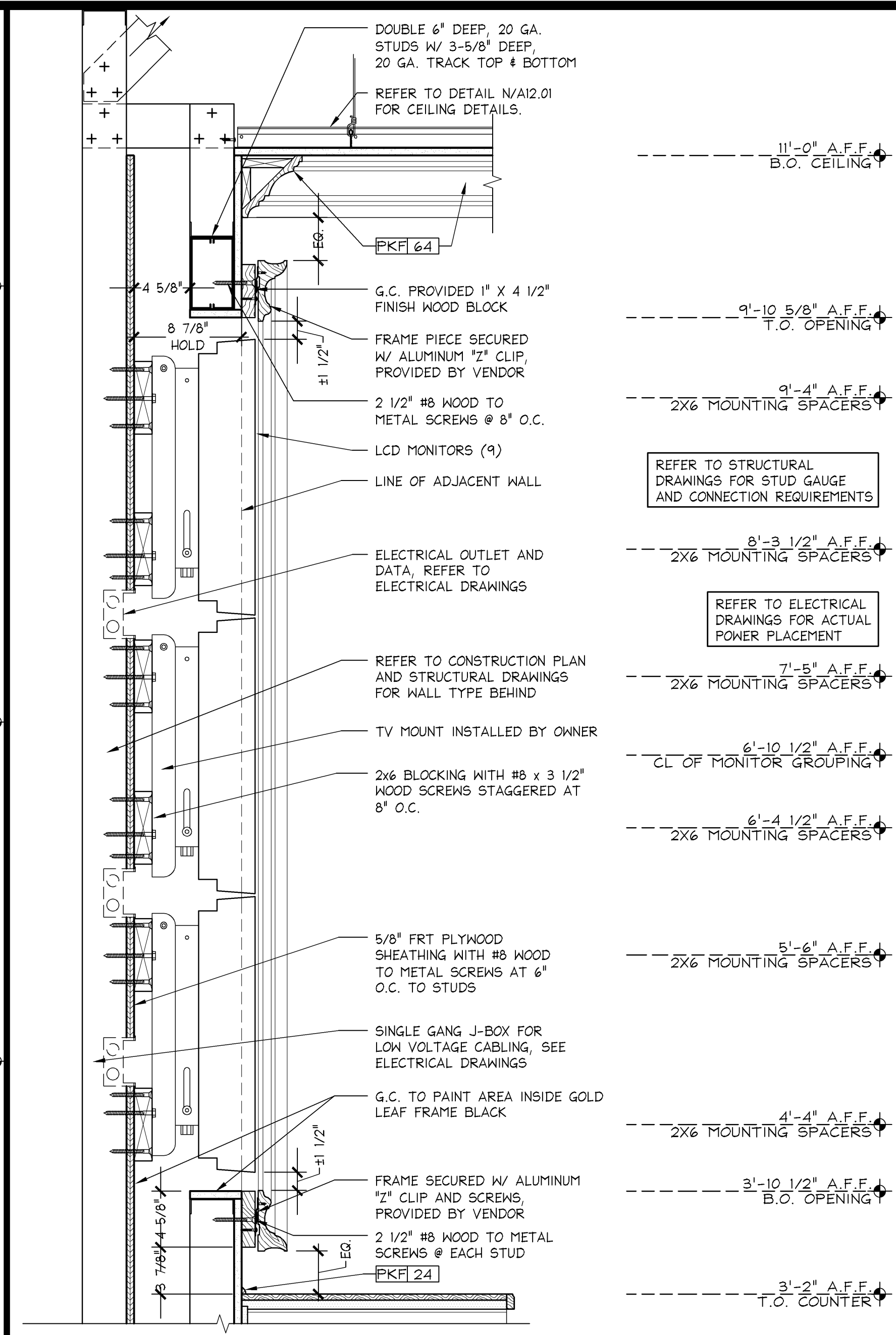


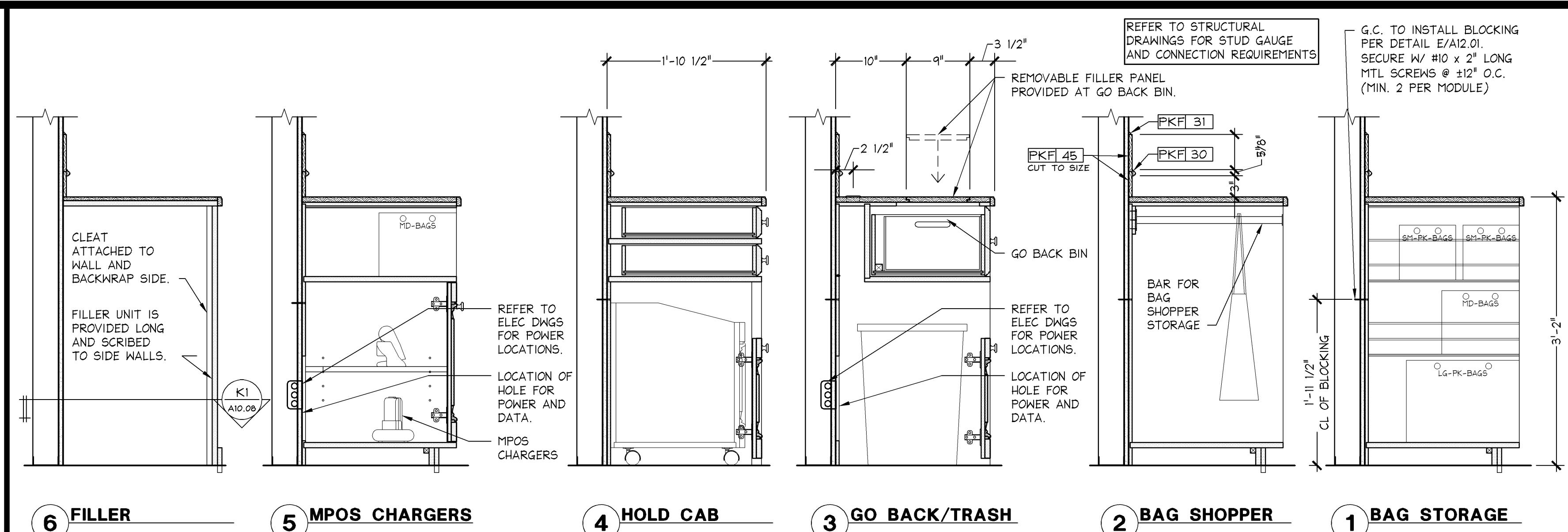
PINK BACKWRAP CUBBIES SECTIONS

1 1/2" = 1'-0" R
05D-A1008-R00-DET1 05.02.14



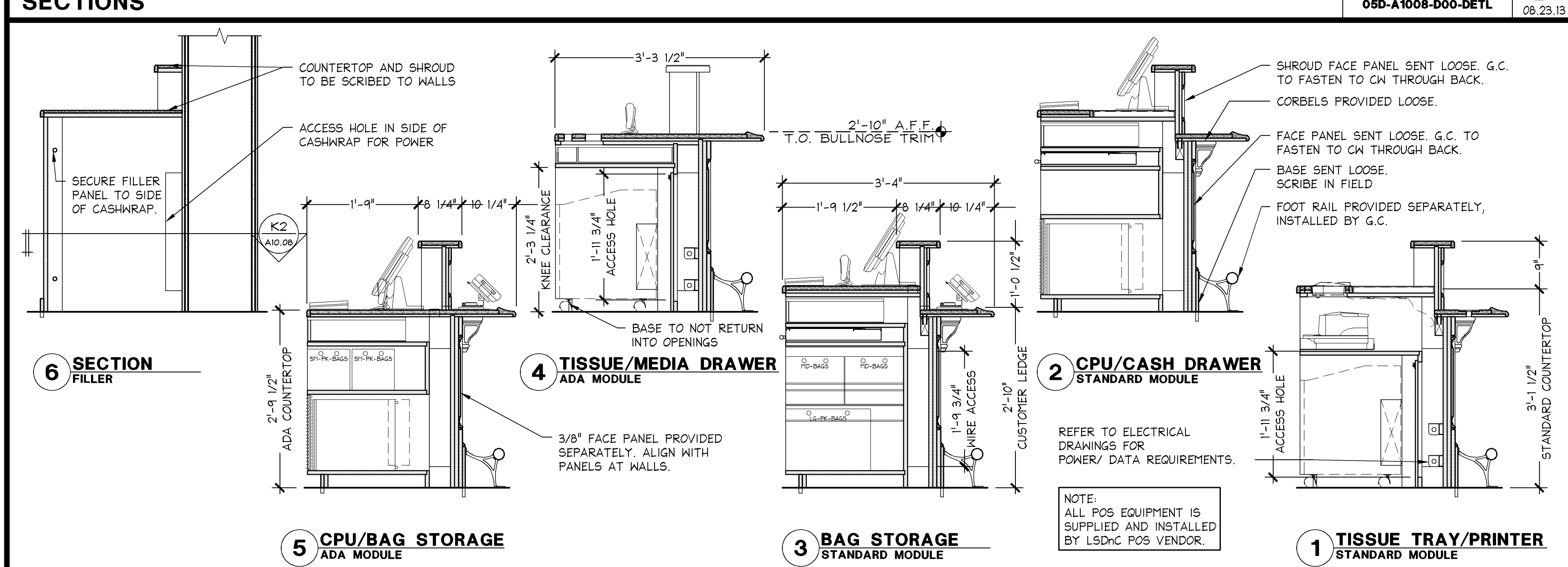
BACKWRAP 46" LCD (6-REGISTER) SECTION

1 1/2" = 1'-0" L
05D-A1008-L02-DET1 05.02.14



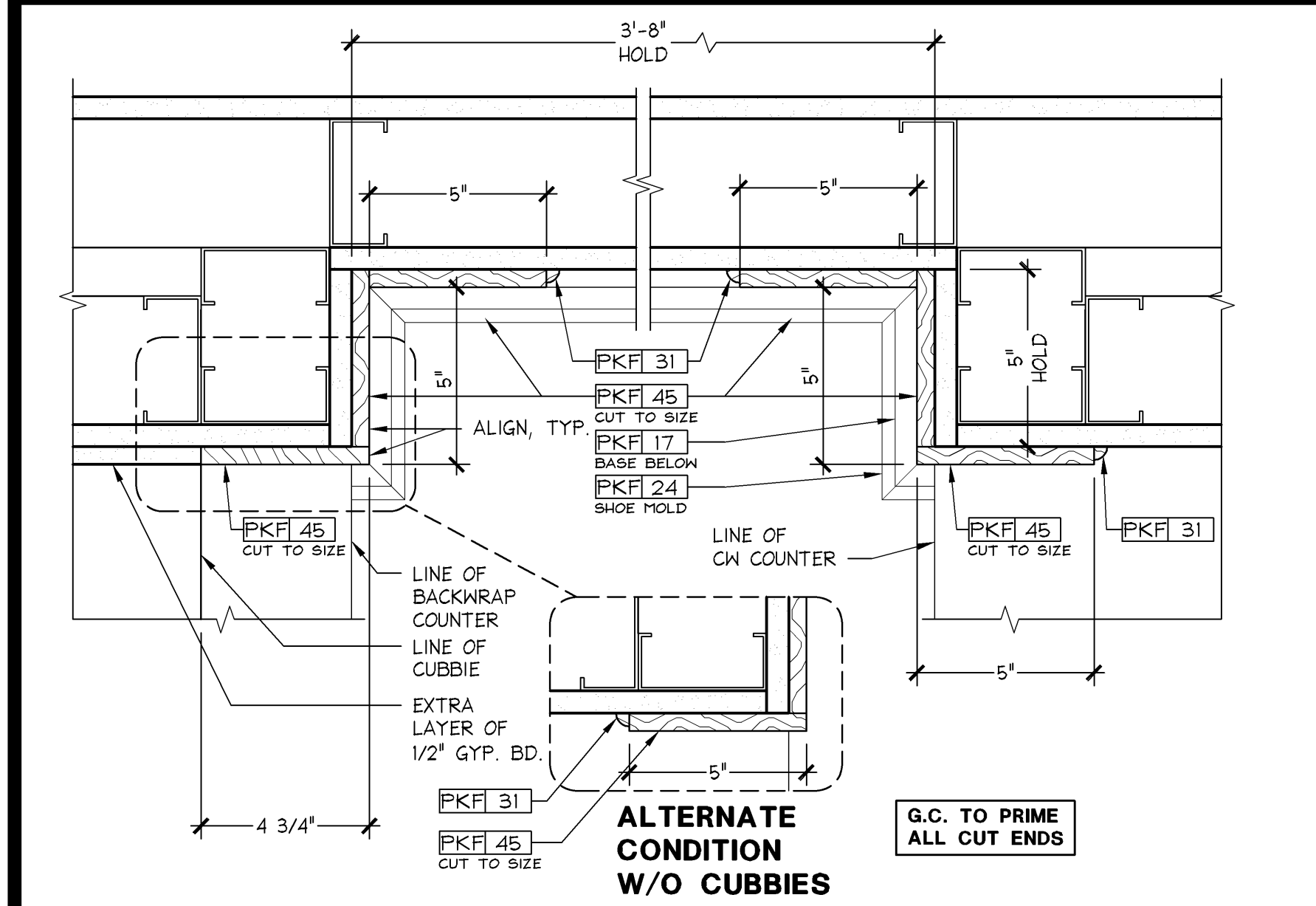
PINK BACKWRAP SECTIONS

1" = 1'-0" D
05D-A1008-D00-DET1 05.23.13



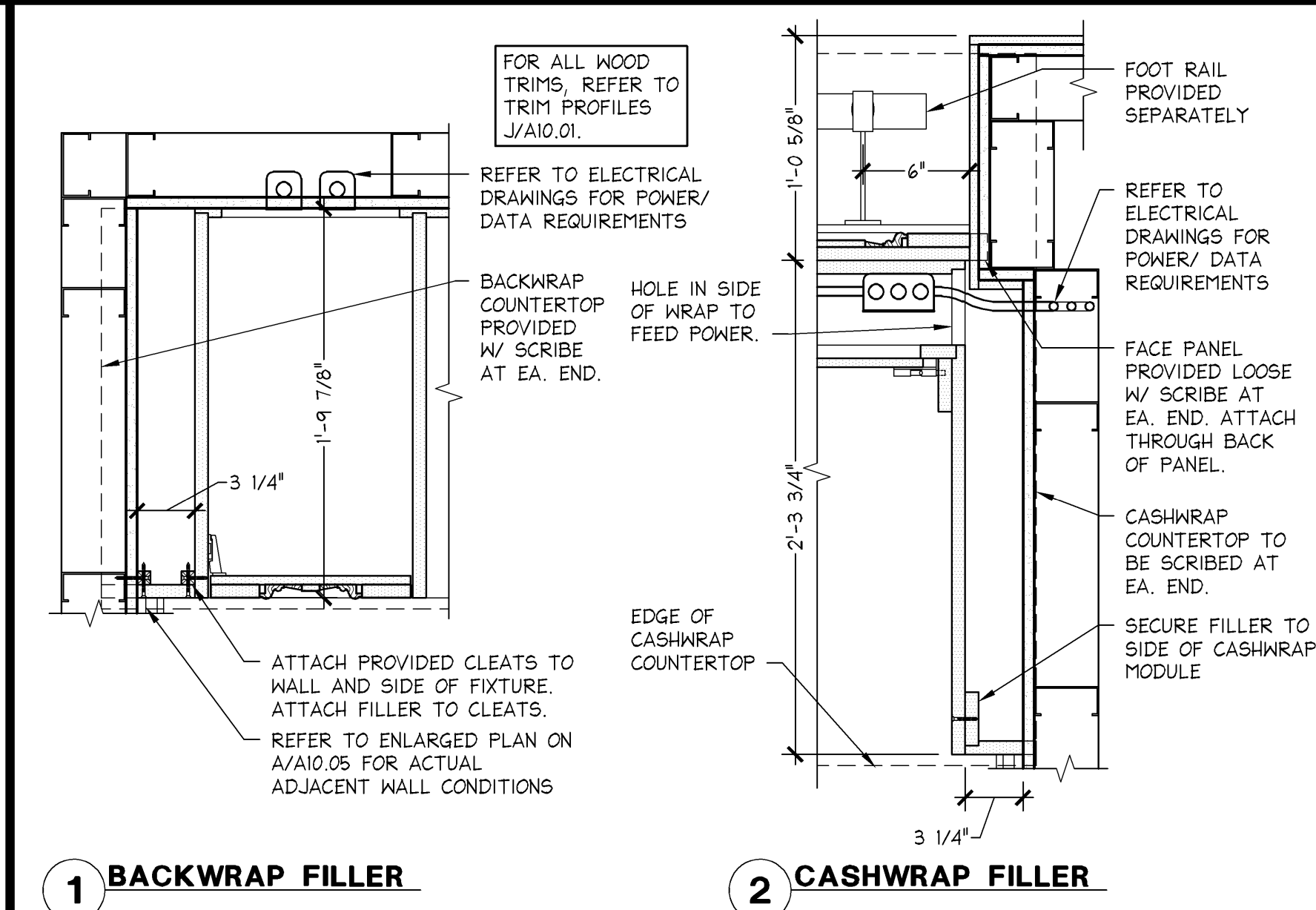
PINK CASHWRAP SECTIONS

3/4" = 1'-0" C
05D-A1008-C00-DET1 05.02.14



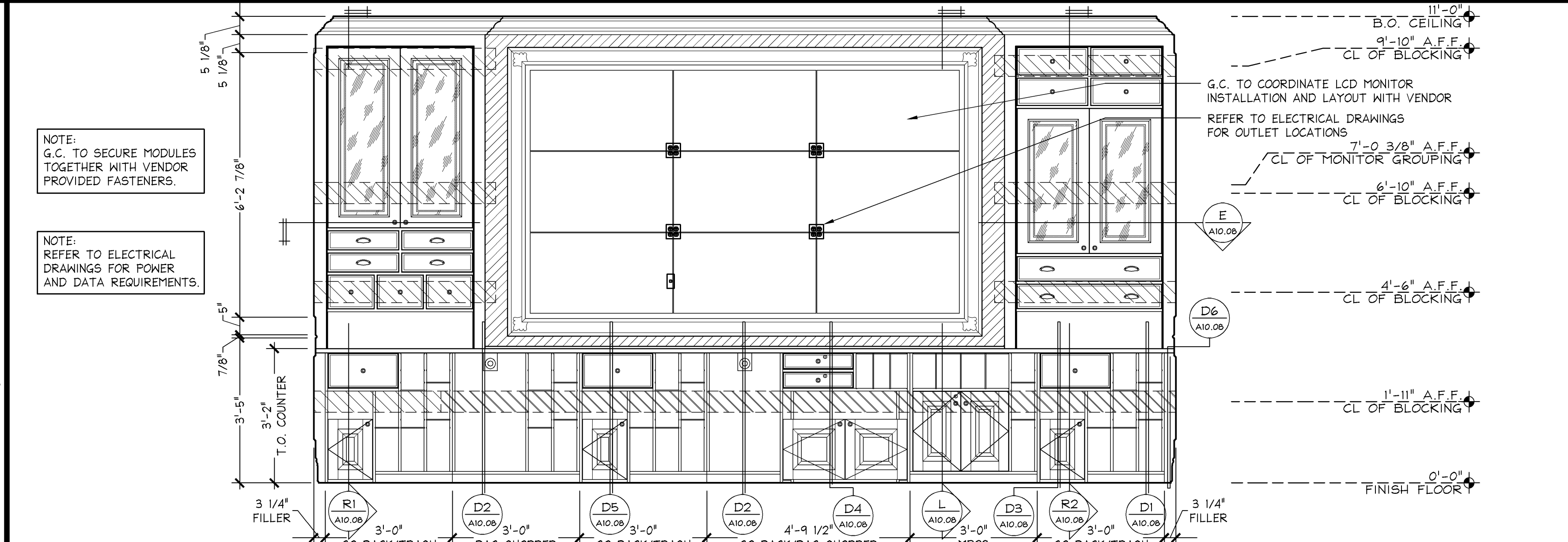
PINK CASHWRAP ROOM BUMP-OUT DETAIL

3" = 1'-0" P
05D-A1008-P00-DET1 12.13.13



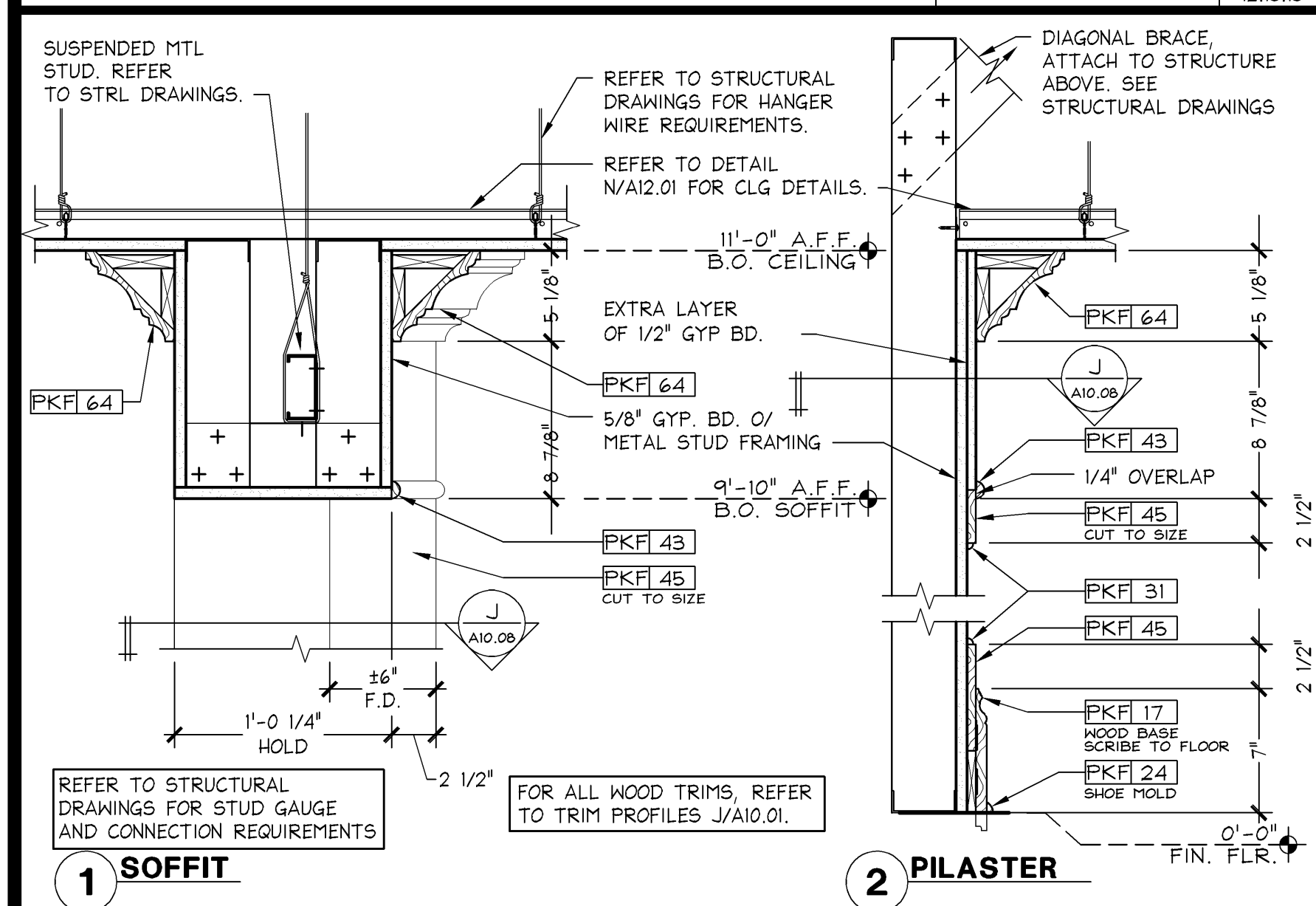
PINK CASHWRAP AND BACKWRAP FILLER DETAILS

1 1/2" = 1'-0" K
05D-A1008-K00-DET1 05.23.13



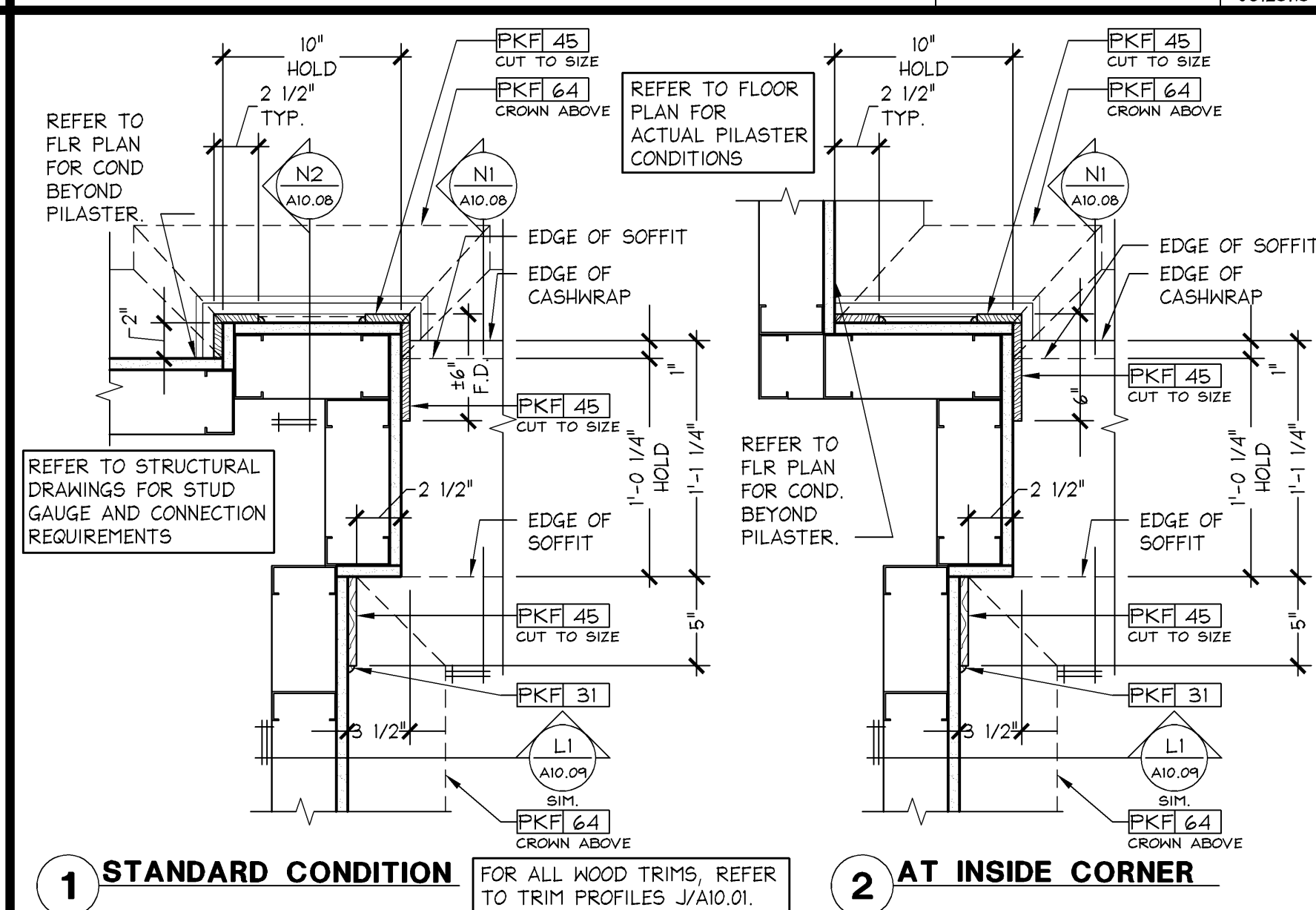
PINK 6 REGISTER BACKWRAP ELEVATION

1/2" = 1'-0" B
05D-A1008-B05-DET1 05.02.14



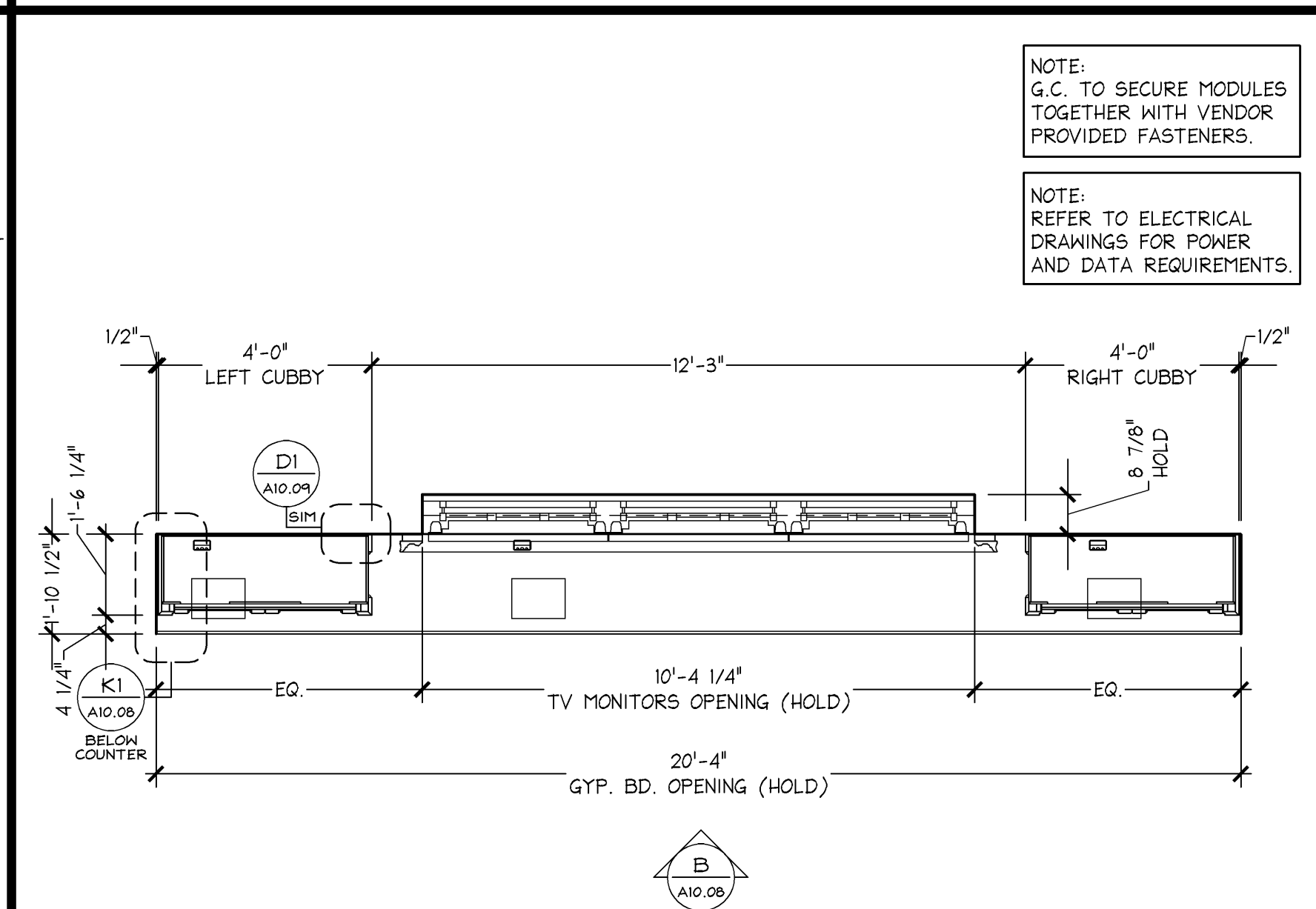
PINK CASHWRAP SOFFIT AND PILASTER SECTION

1 1/2" = 1'-0" N
05D-A1008-N00-DET1 12.13.13



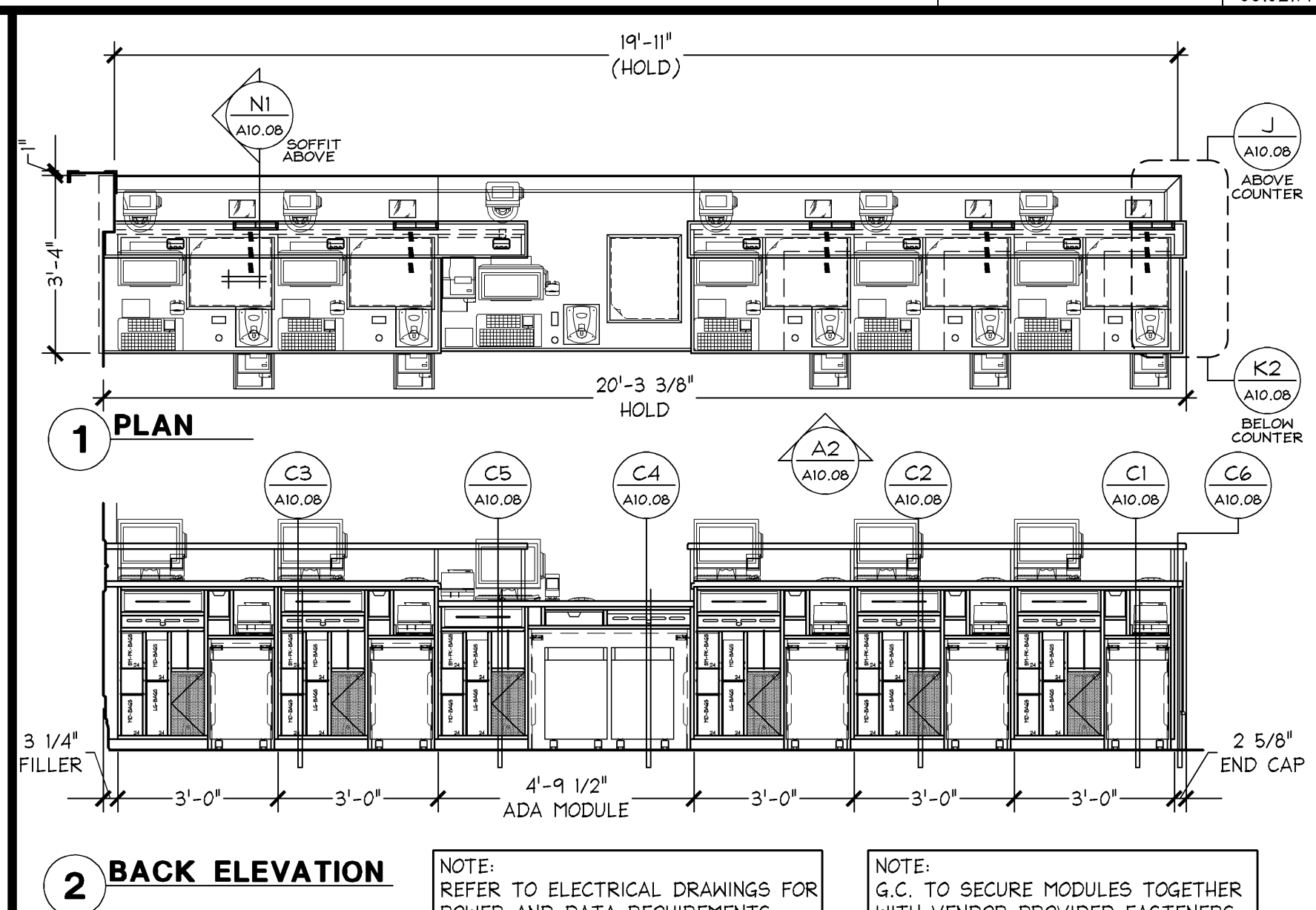
PINK CASHWRAP PILASTER DETAIL

1 1/2" = 1'-0" J
05D-A1008-J00-DET1 10.28.13



PINK 6 REGISTER BACKWRAP PLAN

3/8" = 1'-0" E
05D-A1008-E05-DET1 05.02.14



PINK 6 REGISTER CASHWRAP PLAN & ELEVATION

3/8" = 1'-0" A
05D-A1008-A03-DET1 04.04.14

GreenbergFarrow

1430 West Peachtree Street NW
Suite 200
Atlanta, GA 30309
t. 404.601.4000 f. 404.601.3970

Limited brands

LIMITED STORE PLANNING, INC.
d/b/a STORE DESIGN & CONSTRUCTION
Three Limited Parkway • Columbus, Ohio 43230
Telephone: 614.415.7000 • Fax: 614.415.7349

PROJECT INFORMATION:

010501726

PINK VICTORIA'S SECRET

FAYETTE MALL
3401 NICHOLASVILLE RD
SPACE # 1-904
LEXINGTON, KY 40503

NEW PACKAGE: 15159A
PINK GENERATION: 20140534
I/A/E PROJECT #: 00062007

REVISIONS:

NO.	DESCRIPTION	DATE
1	ELITE CONSTRUCTION GROUP LAKE JACKSON, TX PHONE: 979.284.0712 NOTE: THESE PRINTS HAVE BEEN REDUCED BY 50 PERCENT SCALE WILL BE 50 PERCENT OF WHAT IS NOTED ON PLANS	

DATE ISSUED: 09-05-2014
DESIGNED BY: APL
DRAWN BY: AS
CHECKED BY: AD

PINK CASHWRAP & BACKWRAP

DRAWING NUMBER:
A10.08